



PARKING SUMMARY	
DUNES HOUSE PARKING	63 SPACES*
TENNIS CLUB PARKING	81 SPACES
TOTAL POTENTIAL PARKING YIELD	144 SPACES
DRIVE ISLES	24' WIDE
END PARKING SPACES	10' X 20'
STANDARD SPACES	9' X 20'
PARKING MATERIAL	1" RIBBON CURB/PLANTATION MIX AGGREGATE.

NOTES:
*PARKING YIELD BASED ON DUNES HOUSE CONCEPT PLAN REVISED
MAY 2, 2022.

PREPARED FOR:
PALMETTO DUNES POA
PREPARED BY:

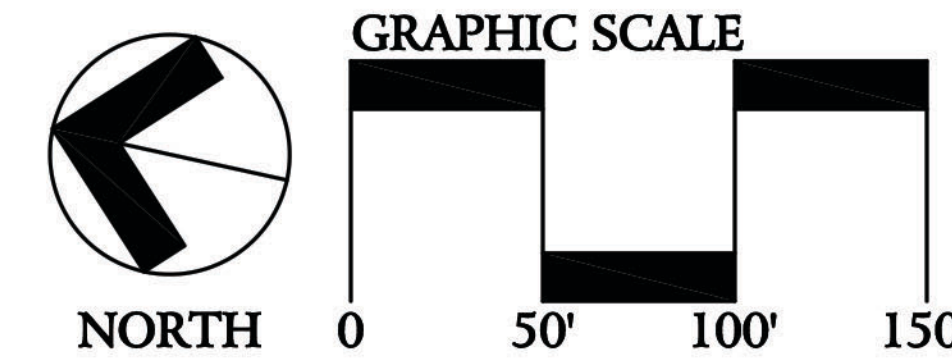


J. K. TILLER ASSOCIATES, INC.
LAND PLANNING LANDSCAPE ARCHITECTURE
TEN PINCKNEY COLONY ROAD SUITE 101 BLUFFTON, SC 29909
Voice 843.815.4800 JKTiller@jktiller.com Fax 843.815.4802

PALMETTO DUNES

DUNES HOUSE PARKING STUDY COMPOSITE

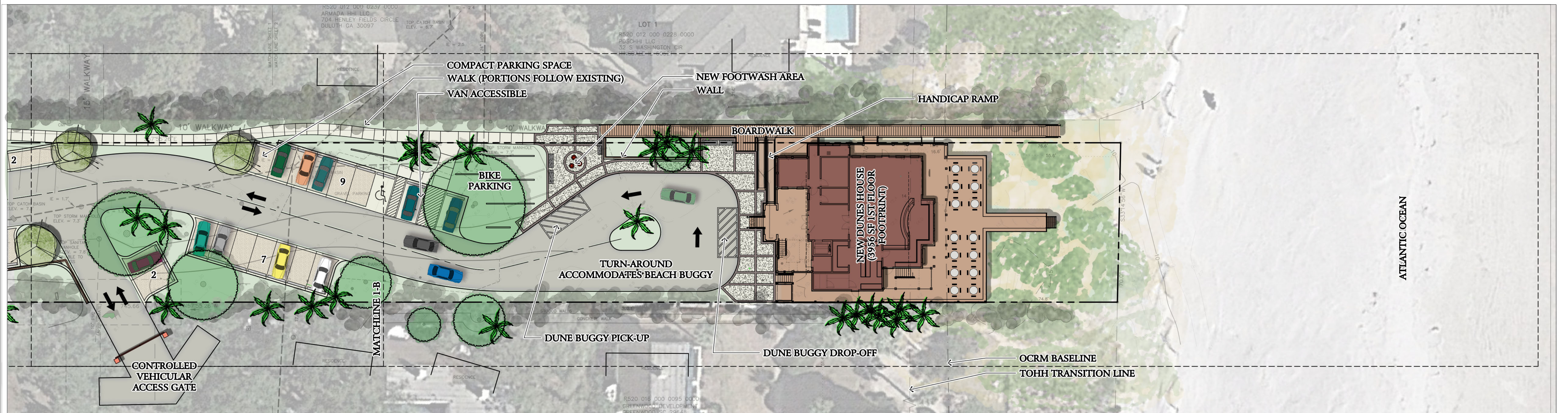
HILTON HEAD ISLAND, SOUTH CAROLINA



MAY 2, 2022

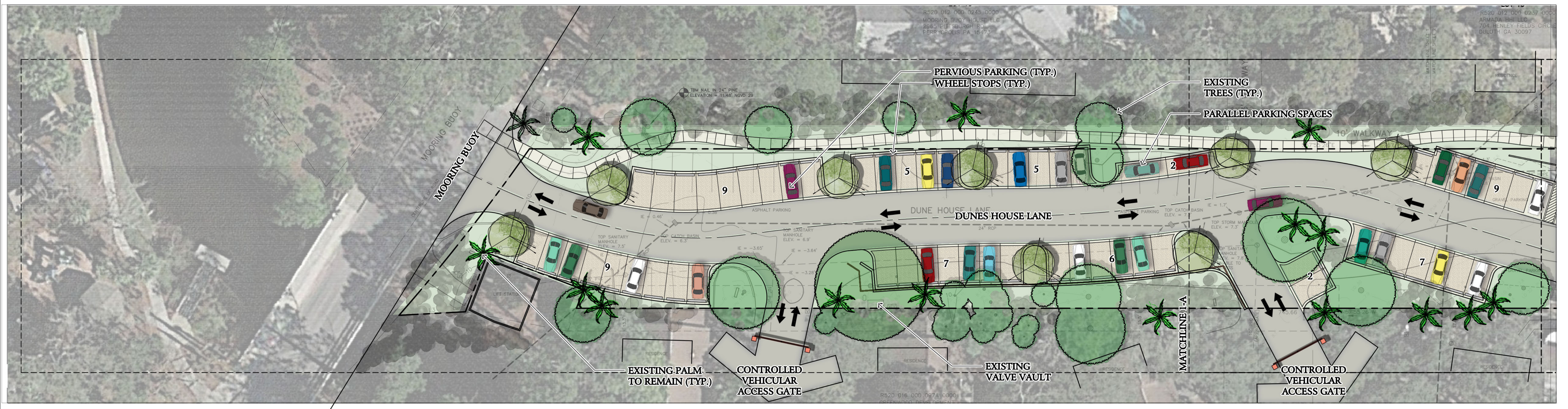
THIS IS A CONCEPTUAL PLAN AND IS SUBJECT TO CHANGE. ALL SURVEY INFORMATION AND SITE BOUNDARIES WERE COMPILED FROM A VARIETY OF UNVERIFIED SOURCES AT VARIOUS TIMES AND AS SUCH ARE INTENDED TO BE USED ONLY AS A GUIDE. ALL PROPERTY LINES, TRACT DIMENSIONS AND NARRATIVE DESCRIPTIONS ARE FOR GRAPHIC REPRESENTATION ONLY, AS AN AID TO SITE LOCATION AND POTENTIAL LAND USE, AND ARE NOT LEGAL REPRESENTATIONS AS TO FUTURE USES OR LOCATIONS. J. K. TILLER ASSOCIATES, INC. ASSUMES NO LIABILITY FOR ITS ACCURACY OR STATE OF COMPLETION, OR FOR ANY DECISIONS (REQUIRING ACCURACY) WHICH THE USER MAY MAKE BASED ON THIS INFORMATION. PICTURES TAKEN FROM VARIOUS WEBSITES.

JKT Job Number: 201607-03



SHEET 1-A

63 TOTAL PARKING SPACES PROVIDED (INCLUDING 2 DUNE BUGGY SPACES)



SHEET 1-B

PREPARED FOR:
PALMETTO DUNES POA

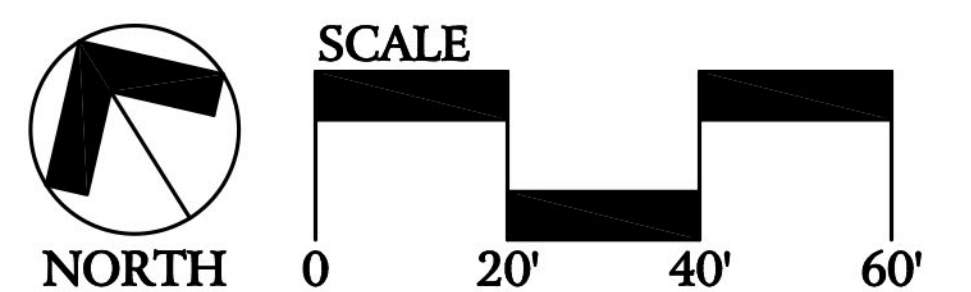
PREPARED BY:
J. K. TILLER ASSOCIATES, INC.

LAND PLANNING LANDSCAPE ARCHITECTURE
181 BLUFFTON ROAD, SUITE F203 BLUFFTON, SC 29910
Voice 843.815.4800 jktiller@jktiller.com Fax 843.815.4802

DUNES HOUSE IMPROVEMENTS CONCEPTUAL PLAN

TOWN OF HILTON HEAD ISLAND, SOUTH CAROLINA

MAY 2, 2022



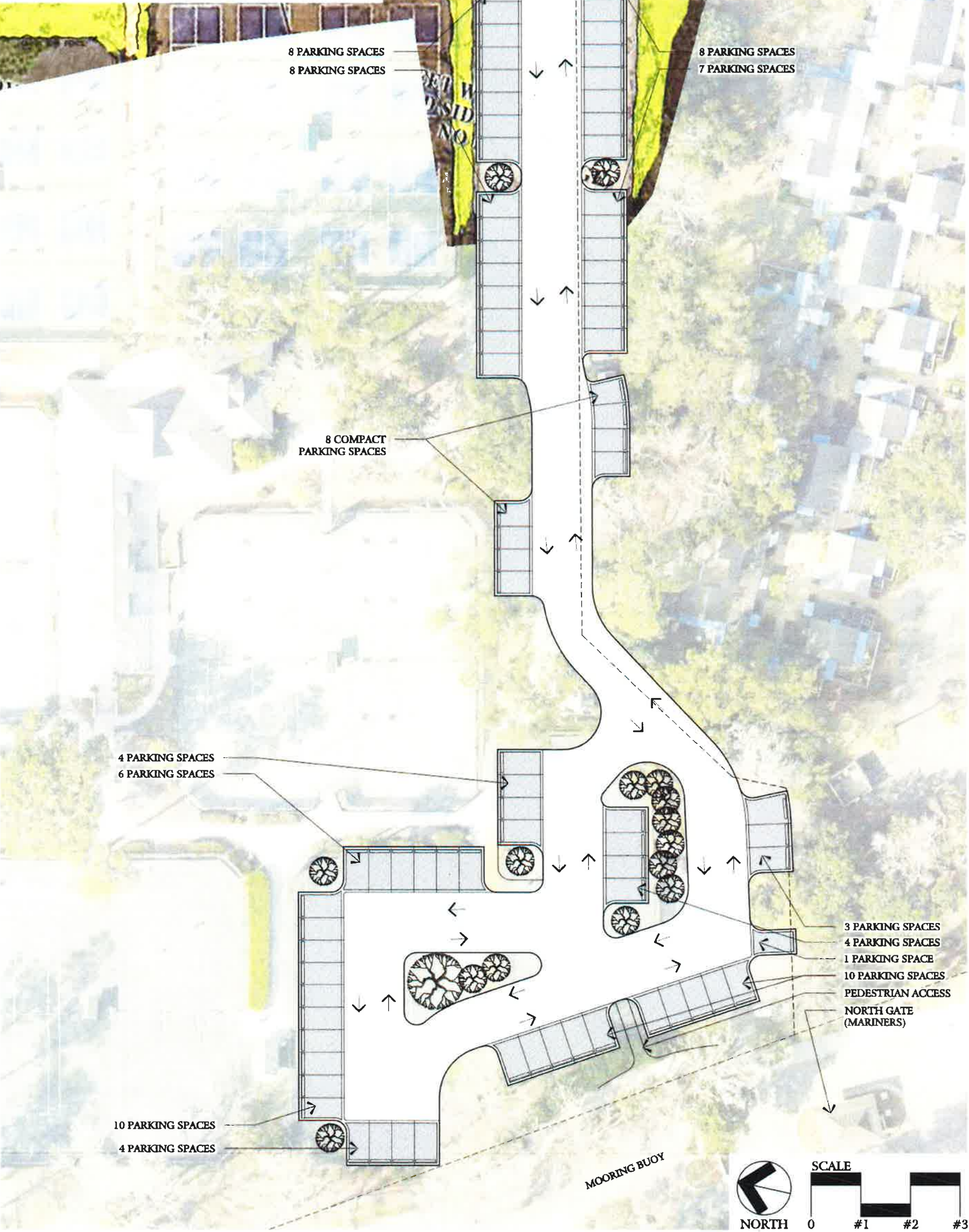
THIS IS A CONCEPTUAL PLAN AND IS SUBJECT TO CHANGE. ALL SURVEY INFORMATION AND SITE BOUNDARIES WERE COMPILED FROM A VARIETY OF UNVERIFIED SOURCES AT VARIOUS TIMES AND AS SUCH ARE INTENDED TO BE USED ONLY AS A GUIDE. ALL PROPERTY LINES, TRACT DIMENSIONS AND NARRATIVE DESCRIPTIONS ARE FOR GRAPHIC REPRESENTATION ONLY, AS AN AID TO SITE LOCATION AND POTENTIAL LAND USE, AND ARE NOT LEGAL REPRESENTATIONS AS TO FUTURE USES OR LOCATIONS. J. K. TILLER ASSOCIATES, INC. ASSUMES NO LIABILITY FOR ITS ACCURACY OR STATE OF COMPLETION, OR FOR ANY DECISIONS (REQUIRING ACCURACY) WHICH THE USER MAY MAKE BASED ON THIS INFORMATION.

JKT Job Number: 201607-03

PARKING SUMMARY*

TENNIS PARKING (EXISTING):	+/-56 SPACES
TENNIS PARKING PROPOSED:	81 SPACES
DRIVE ISLES	24' WIDE
END PARKING SPACES	10' X 20'
STANDARD SPACES	9' X 20'
PARKING MATERIAL	1' HEADER CURB/PLANTATION MDX AGGREGATE.

NOTES:
*PARKING YIELD MAY NEED TO BE REVISED ONCE A TREE AND TOPOGRAPHIC ASBUILT SURVEY IS PROVIDED.
**PARKING COUNT BASED ON AERIAL ANALYSIS.



PREPARED FOR:
PALMETTO DUNES POA

PREPARED BY:

J. K. TILLER ASSOCIATES, INC.



LAND PLANNING LANDSCAPE ARCHITECTURE
TEN PINCKNEY COLONY ROAD SUITE 101 BLUFFTON, SC 29909
Phone 843.815.4800 jktiller@jktiller.com Fax 843.815.4802

PALMETTO DUNES
TENNIS PARKING STUDY

TOWN OF HILTON HEAD, SOUTH CAROLINA

DECEMBER 10, 2019

THIS IS A CONCEPTUAL PLAN AND IS SUBJECT TO CHANGE. ALL SURVEY INFORMATION AND SITE BOUNDARIES WERE COMPILED FROM A VARIETY OF UNVERIFIED SOURCES AT VARIOUS TIMES AND AS SUCH ARE INTENDED TO BE USED ONLY AS A GUIDE. ALL PROPERTY LINES, TRACT DIMENSIONS AND NARRATIVE DESCRIPTIONS ARE FOR GRAPHIC REPRESENTATION ONLY, AS AN AID TO SITE LOCATION AND POTENTIAL LAND USE, AND ARE NOT LEGAL REPRESENTATIONS AS TO FUTURE USES OR LOCATIONS. J. K. TILLER ASSOCIATES, INC. ASSUMES NO LIABILITY FOR ITS ACCURACY OR STATE OF COMPLETION, OR FOR ANY DECISIONS (REQUIRING ACCURACY) WHICH THE USER MAY MAKE BASED ON THIS INFORMATION. JKT Job Number: 201607-03